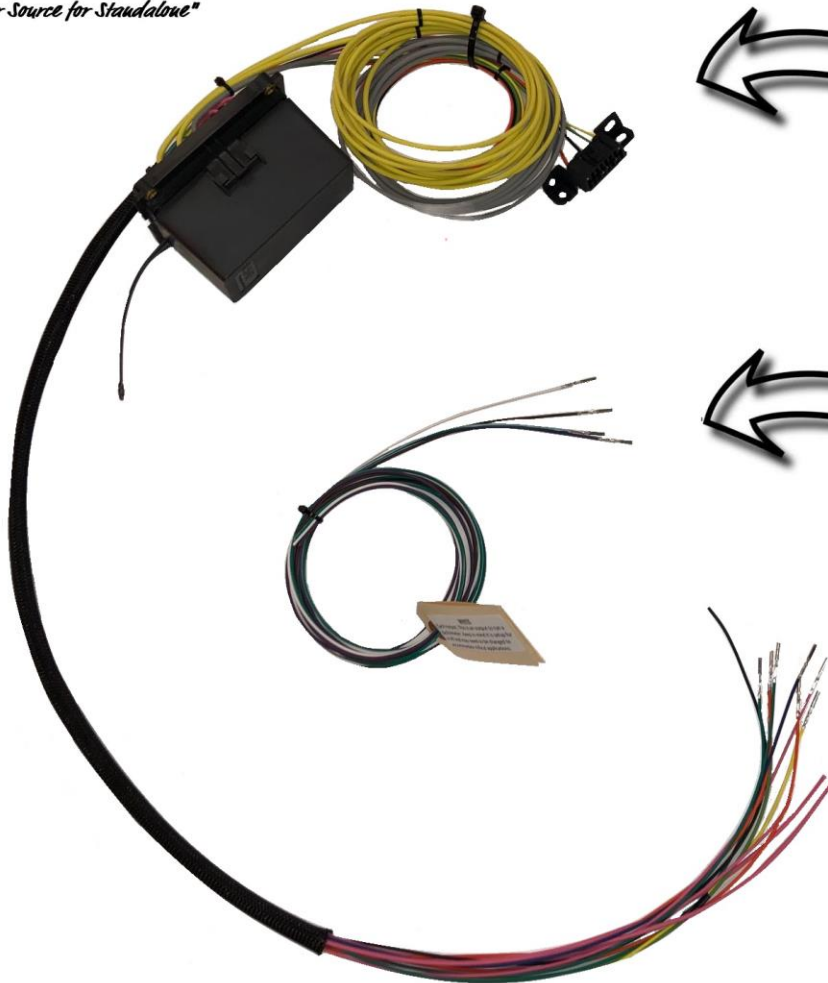




"Your Source for Standaone"

## Gen3 DIY Kit Wire Identity



### Fusebox Outputs:

- Grey- Fuel Pump +
- Pink- 12v Key IGN (12v with key on AND while cranking)
- Yellow1- Fan1 +
- Yellow2-Fan2 +
- OBD2- Diagnostic Port

### MAIN BATTERY CONNECT

A minimum of 8ga wire goes DIRECTLY from Battery+ to the stud on the BACK of the Swap Fusebox. DO NOT install a disconnect in this wire.



The gauge wires do not have to be used but only there for your convince:

- White- Red (or green) #10 TACHOMETER
- Brown- Red (or green) #46 CHECK ENGINE LIGHT GROUND CONTROL
- Green/White- Red (or green) #50 SPEEDOMETER 4L60/80e Trans ONLY
- Purple- Blue #33 BRAKE SWITCH SIGNAL 4L60/80e ONLY

### ECM Connections: Remove the factory wire in the ECM and install new wire/pin

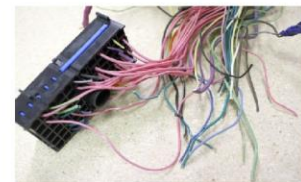
- Orange- Blue # 20
- Orange- Blue #57
- Small Pink- Blue #19
- Small Pink- Blue #75
- Green/White- Red (or green) #9
- Green- Blue 42
- Blue- Red (or green) 33
- Light Green- Blue #58
- Yellow- Blue #59

Black- Tie into Blue #1 wire, leave the factory wire in place and tie this into it

The following wires need to tie into your factory IGN wires from the original fuse box plug.

- Heavy Pink #1- Provides power to Bank 1
- Heavy Pink #2- Provides power to Bank 2

Tie in all pinks going to the square plug.  
Tie half into Heavy Pink1 and half into Heavy Pink2.



Any Questions please email a detailed description of your question(s) to [Info@swapspecialties.com](mailto:Info@swapspecialties.com)